

## Accessibility Guide for Bay Tree Cottage

[louisem200@hotmail.co.uk](mailto:louisem200@hotmail.co.uk), 01430422266, [www.nordhamcottages.co.uk](http://www.nordhamcottages.co.uk)

**Contact for accessibility enquiries: Louise Martin**



### Welcome

Bay Tree Cottage is part of Nordham Cottages in quiet, rural Nordham.

At the entrance, take the step down into the kitchen and continue on a level surface through a doorway into the sitting/dining room. The stairs are accessible from the entrance, turning 90 degrees towards the top. From the landing there's one step down into the sunny spacious bathroom and one step up to the characterful bedroom with king sized bed and feature fireplace. Shared off road car parking, sunny courtyard garden all on one level, a threshold of 6mm into the outside laundry room.

Approx 8-10 metres from the parking space to the entrance door.

## At a Glance

### Level Access

- There is level access from the main entrance to:
  - Car parking and courtyard garden

## Getting here

9 Nordham, North Cave, Brough  
Hull  
HU152IT

### Travel by public transport

- You can get to Bay Tree Cottage by bus and train.
- Bus Stops: North Cave Station Rd for 143 & 155 & X55  
North Cave Westgate for 143 & 155 (see plan of village in cottage)  
The bus stop is less than ½ mile from Bay Tree Cottage.
- The nearest train station is Brough. The train station is 20 miles / 32.2 km from Bay Tree Cottage.

### Parking

- We have a car park. The parking is less than 50 metres from the main entrance. Parking is not free.
- There is a drop-off point at the main entrance. The drop-off point has a dropped kerb.
- From the car park to the entrance, there is level access. The route is 1000mm wide near the doorway, but is spacious everywhere else.



Car parking are for Bay Tree Cottage and for Horseshoe Cottage, with space for 3 small cars or 2 larger cars



Alloted car park spot at Bay Tree Cottage

## Arrival



### Path to main entrance

- From the street to the main entrance, there is level access.
- The path is 1000mm wide near the entrance doorway, and more in the car park.

### Main entrance

- The main entrance has 6mm threshold.
- The door is 705mm wide.
- The main door is side hung and manual.



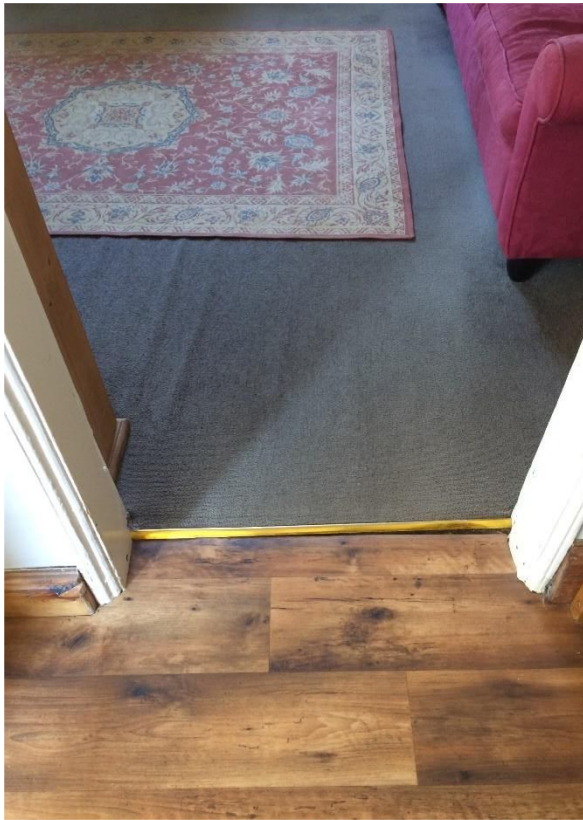
Door threshold and step down into kitchen



Step down into kitchen, 12 cms

### Getting around inside

The doorway from the kitchen to the sitting dining room is 73cms wide with level access from kitchen to sitting dining room.



The staircase is 75.5cms wide

Stairs steps are 19cms in height



The bathroom door is 69cms wide  
Step down into bathroom is 18cm



The bedroom door is 79 cms wide.



Step up into bedroom is 16cms

## Getting around outside

### Car parking and courtyard garden

- From the main entrance to this area, there is level access. The route is 1000mm wide, or more. The entrance is 705mm wide.



Outdoor area and courtyard garden at Bay Tree Cottage



Courtyard garden at Bay Tree Cottage and outside Laundry

## Customer care support

### Accessibility equipment

- Should somebody have an accident during their holidays, we would do whatever we could to help.  
Those with mobility disabilities are advised to consider the door widths in the cottage.



- The courtyard garden may be used for assistance dogs so long as it is cleared and there is walking 2 minutes along the street on a public grassy footpath, suitable for dog walking.

#### **Emergency evacuation procedures**

- Emergency exits are through the front door and through the back door of the cottage.

#### **Customer care support**

- Some staff have disability awareness training.
  - I am available on landline/mobile/email at most times.
- 

Guide last updated: 18 August 2019